

D

C

B

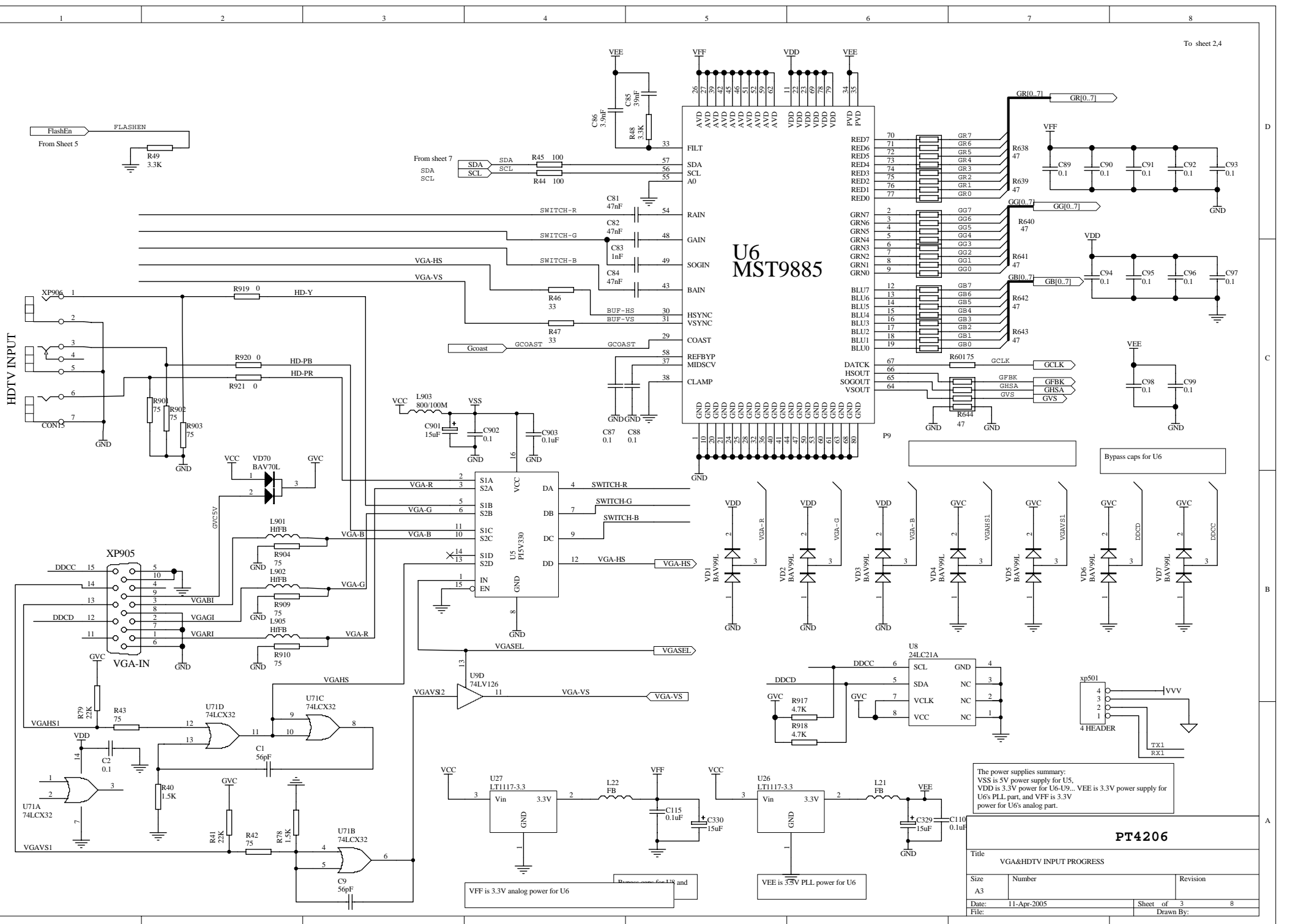
A

D

C

B

A



The power supplies summary:
 VSS is 5V power supply for U5.
 VDD is 3.3V power for U6-U9.. VEE is 3.3V power for U6's PLL part, and VVF is 3.3V power for U6's analog part.

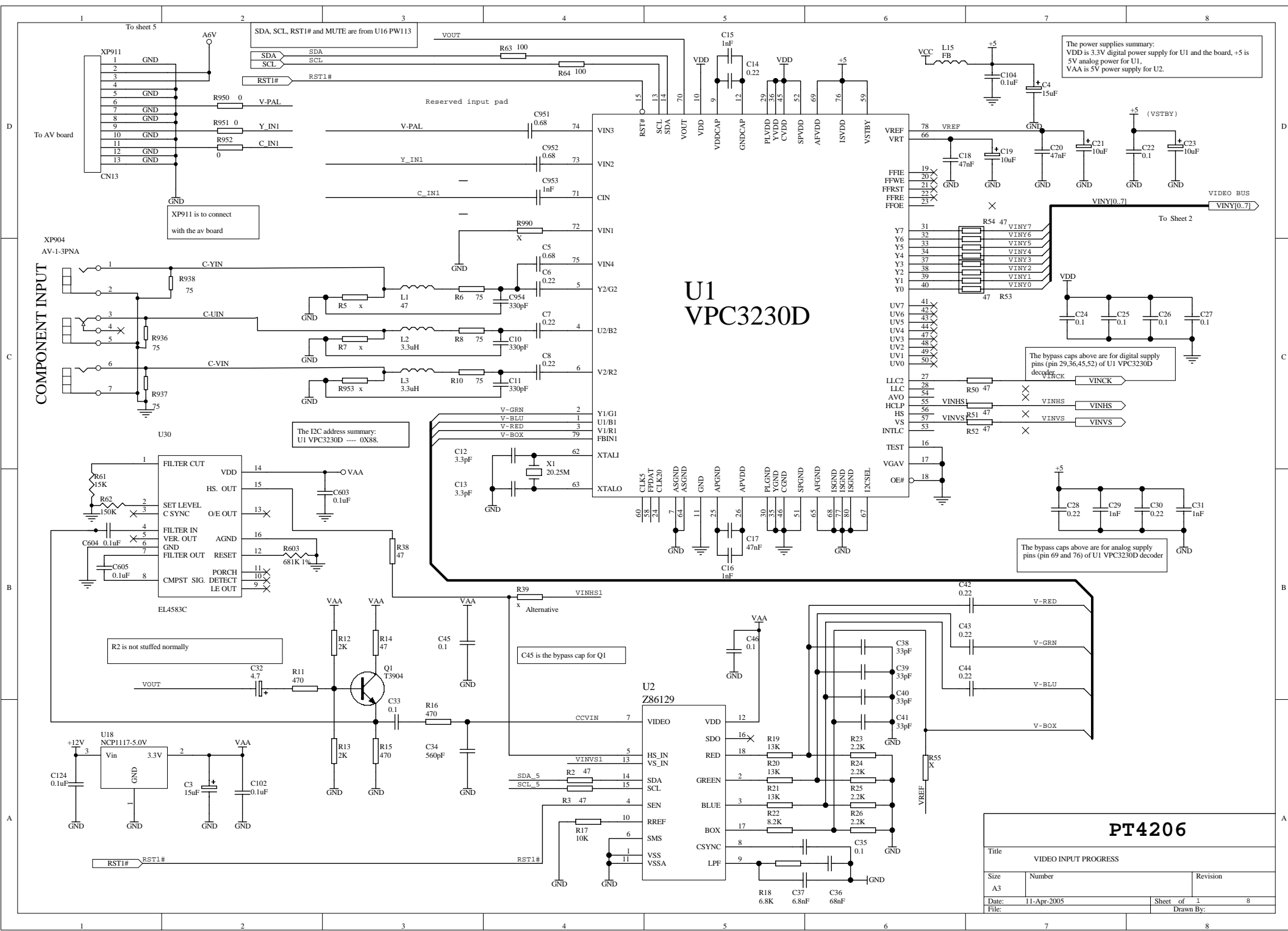
Bypass caps for U6

VVF is 3.3V analog power for U6

VEE is 3.3V PLL power for U6

PT4206

Title VGA&HDTV INPUT PROGRESS		
Size A3	Number	Revision
Date: 11-Apr-2005	Sheet of 3	8
File:	Drawn By:	



The power supplies summary:
 VDD is 3.3V digital power supply for U1 and the board, +5 is 5V analog power for U1.
 VAA is 5V power supply for U2.

U1 VPC3230D

The I2C address summary:
 U1 VPC3230D ---- 0X88.

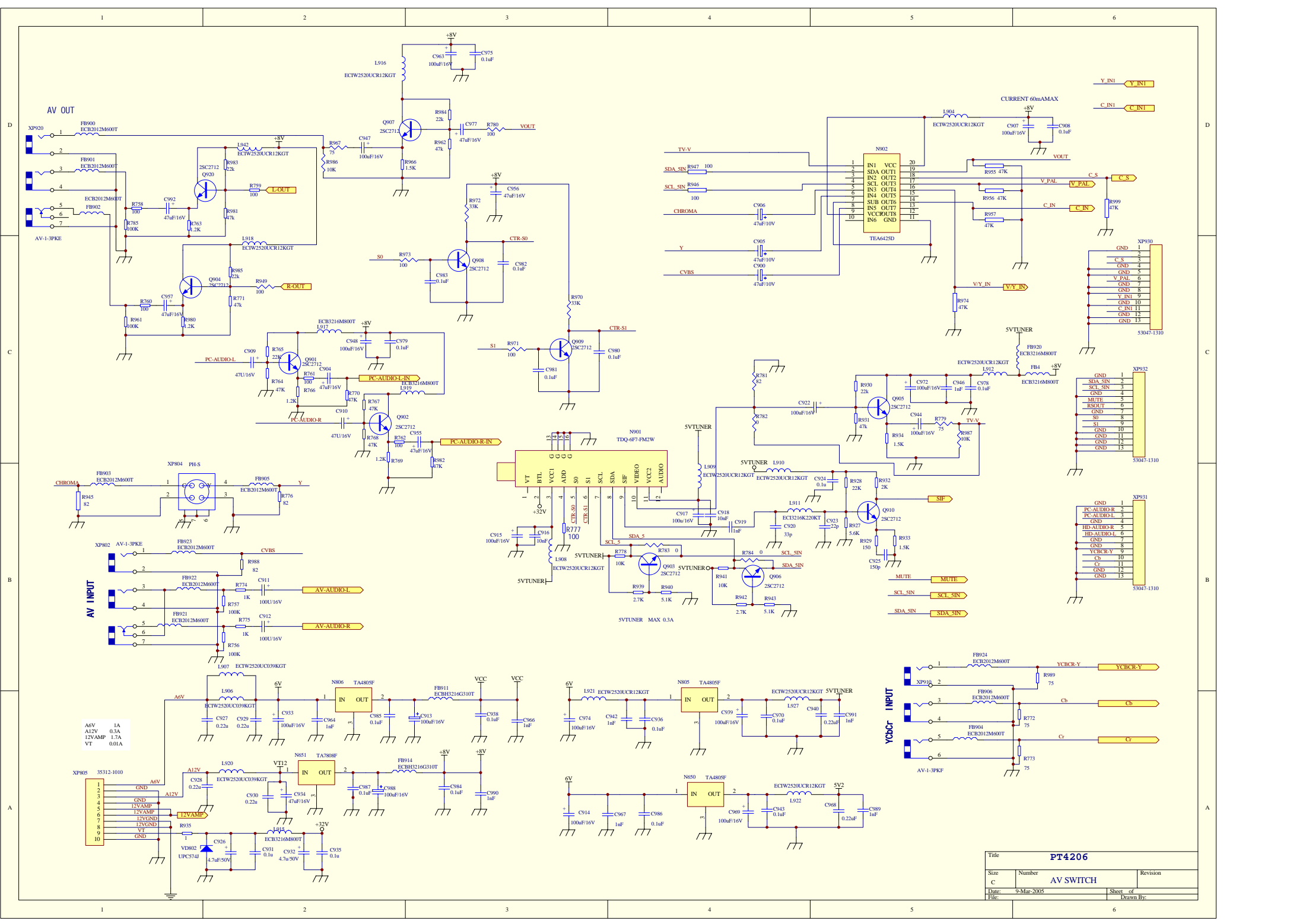
The bypass caps above are for digital supply pins (pin 29,36,45,52) of U1 VPC3230D

The bypass caps above are for analog supply pins (pin 69 and 76) of U1 VPC3230D decoder

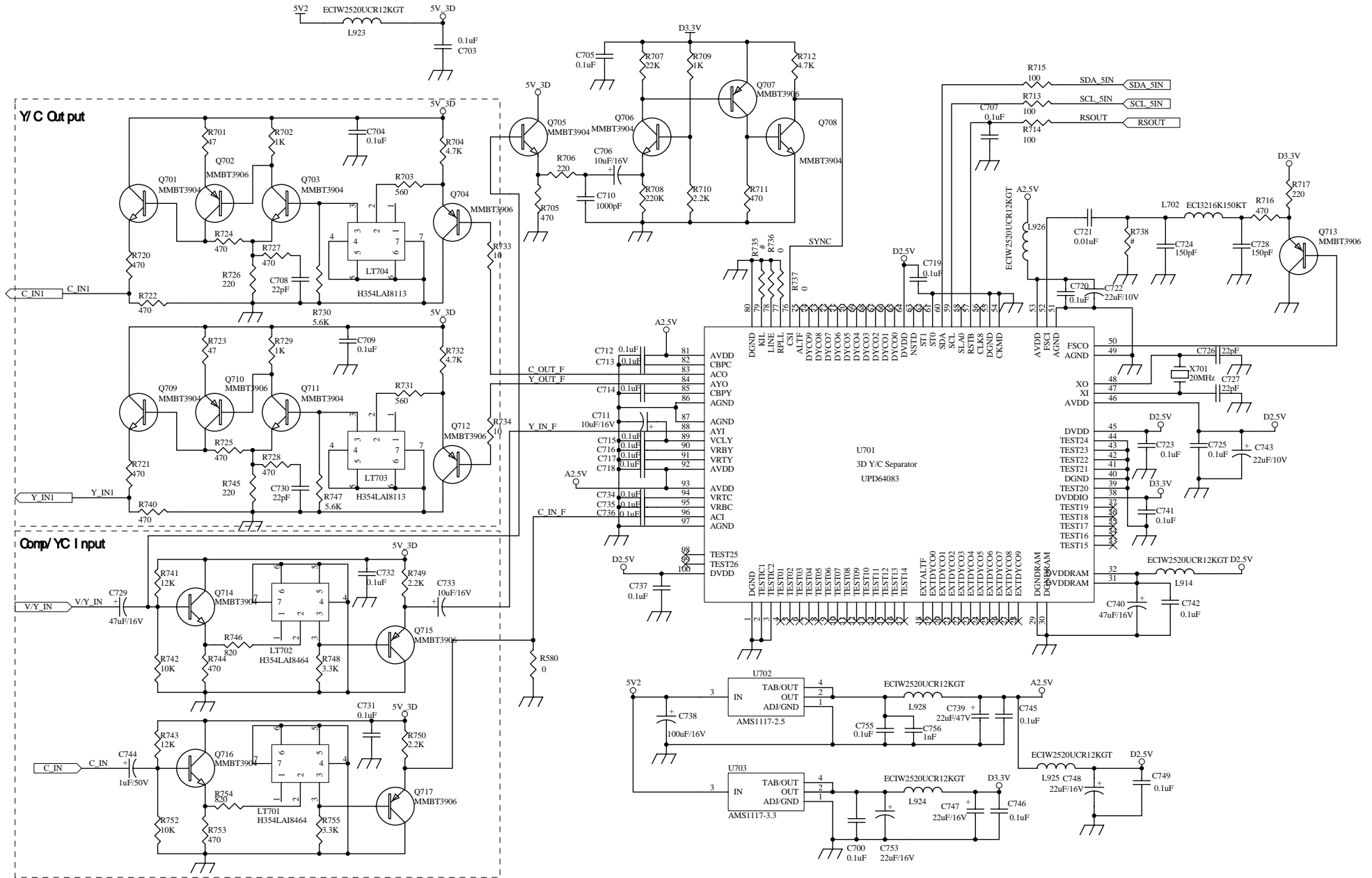
C45 is the bypass cap for Q1

R2 is not stuffed normally

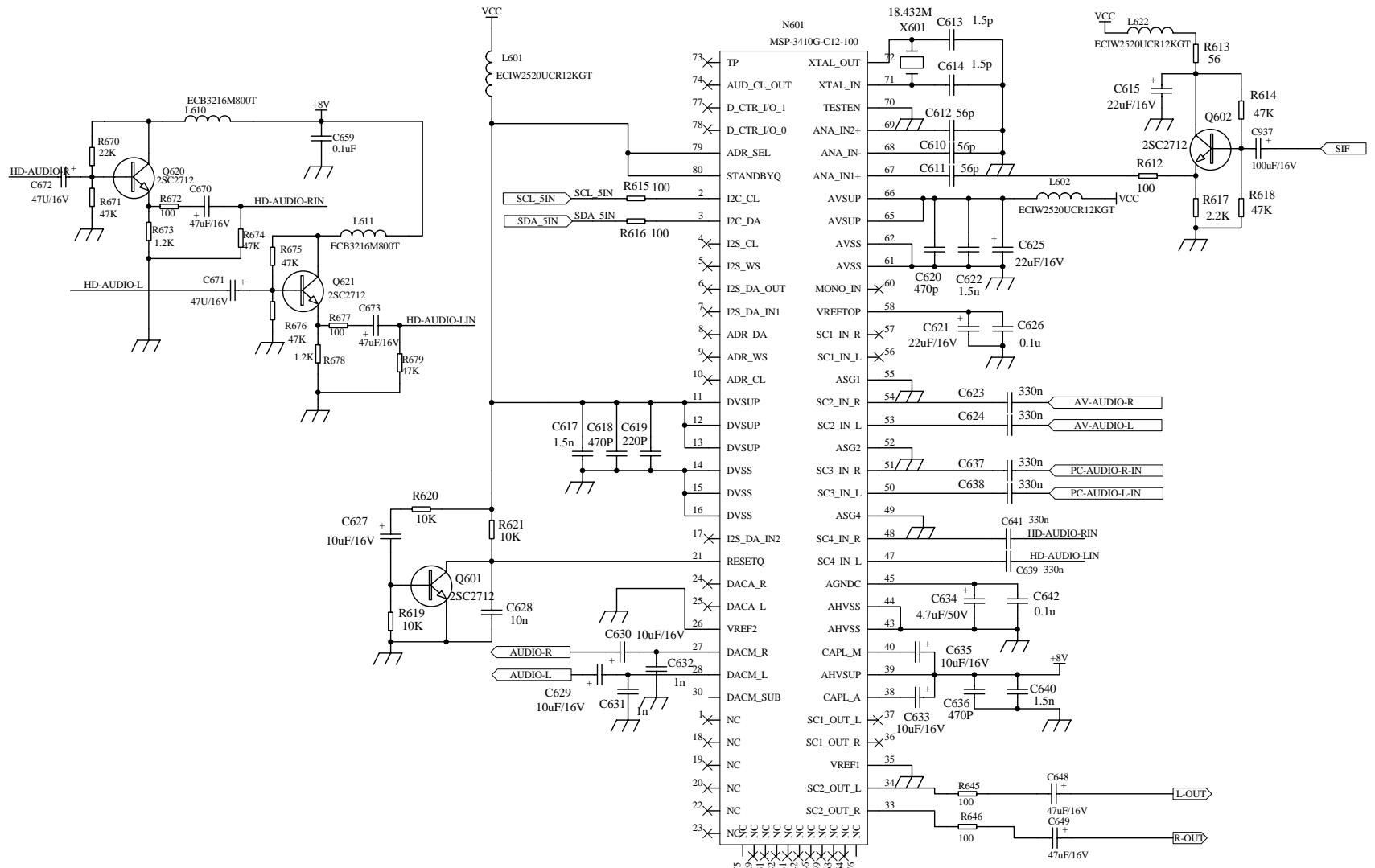
PT4206		
Title VIDEO INPUT PROGRESS		
Size A3	Number	Revision
Date: 11-Apr-2005	Sheet of 1	8
File:	Drawn By:	



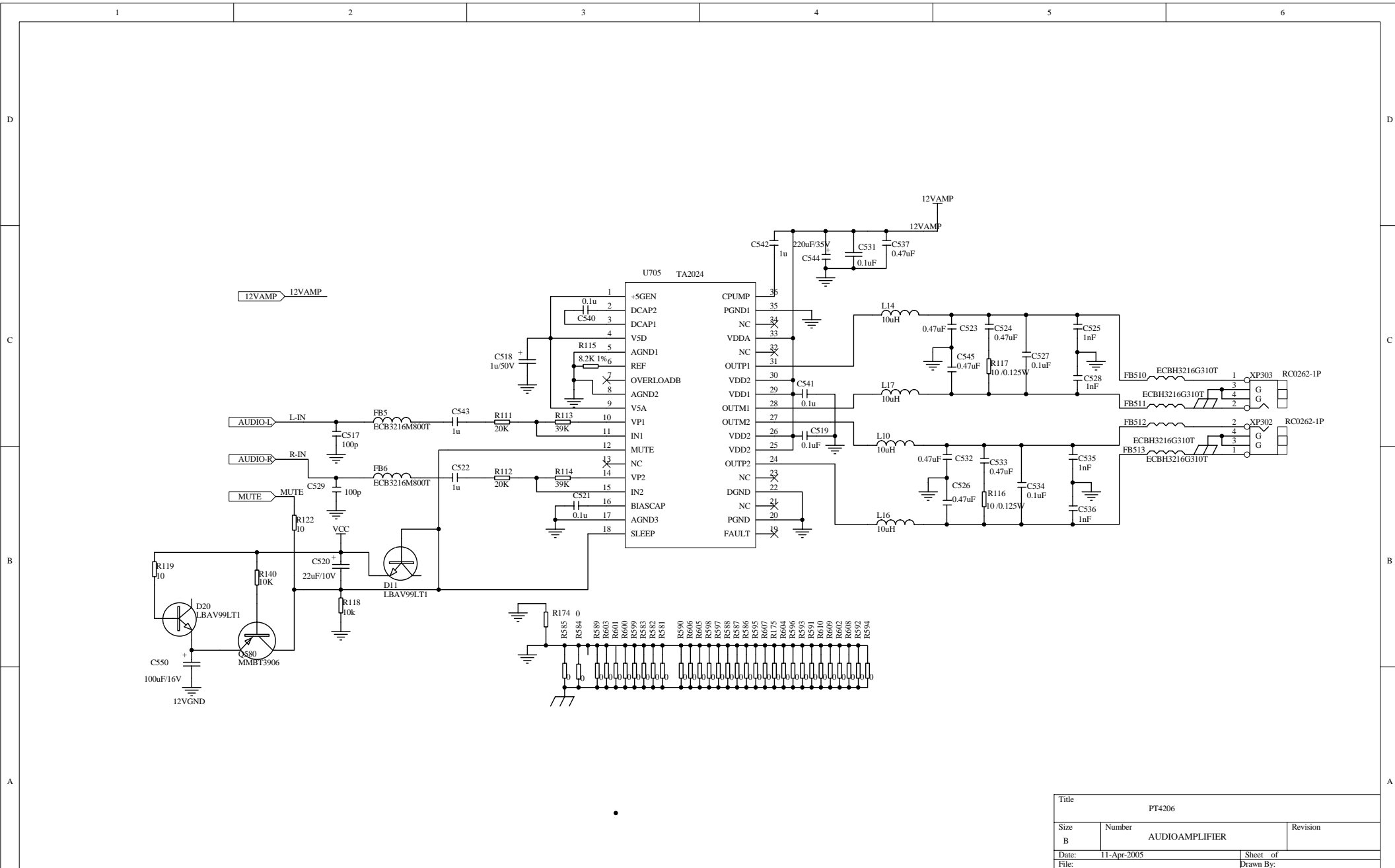
Title			PT4206		
Size	Number	Revision			
C	AV SWITCH				
Date:	9-Mar-2005		Sheet	of	
File:			Sheet	of	
			Drawn By:		



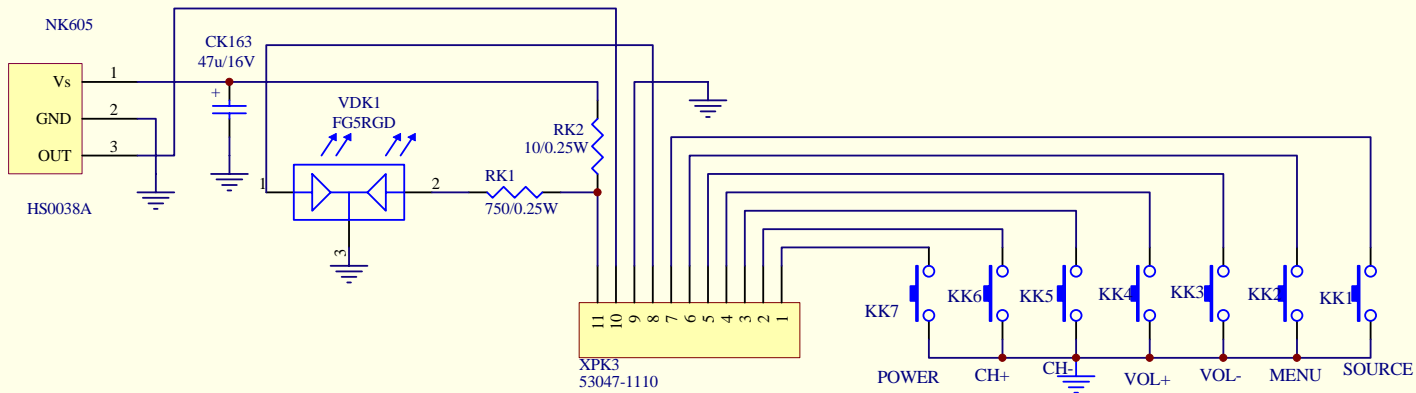
Title		PT4206
Size	Number	NTSC 3D COMB FILTER
A3		
Date:	11-Apr-2005	Sheet of
File:		Drawn By:



Title			PT4206		
Size	Number	AUDIO PROGRESS		Revision	
B					
Date:	11-Apr-2005	Sheet of			
File:		Drawn By:			



Title		PT4206	
Size	Number	Revision	
B	AUDIOAMPLIFIER		
Date:	11-Apr-2005	Sheet of	
File:		Drawn By:	



Title		PT4206	
Size	Number	KEY BOARD	
A4		Revision	
Date:	9-Mar-2005	Sheet of	
File:		Drawn By:	