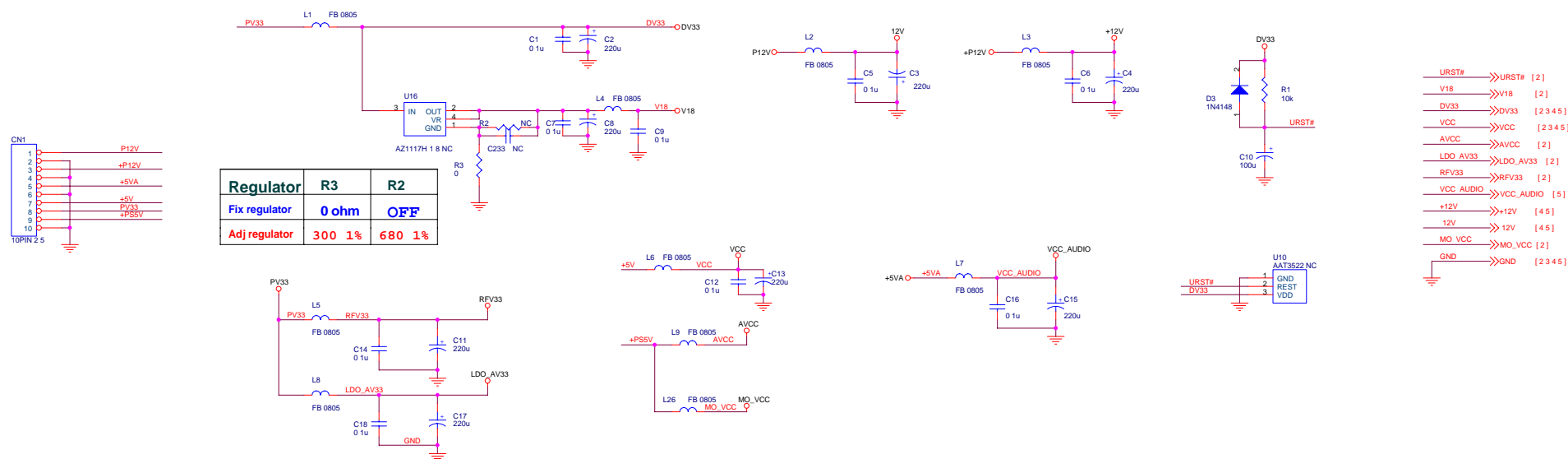


[illegible]

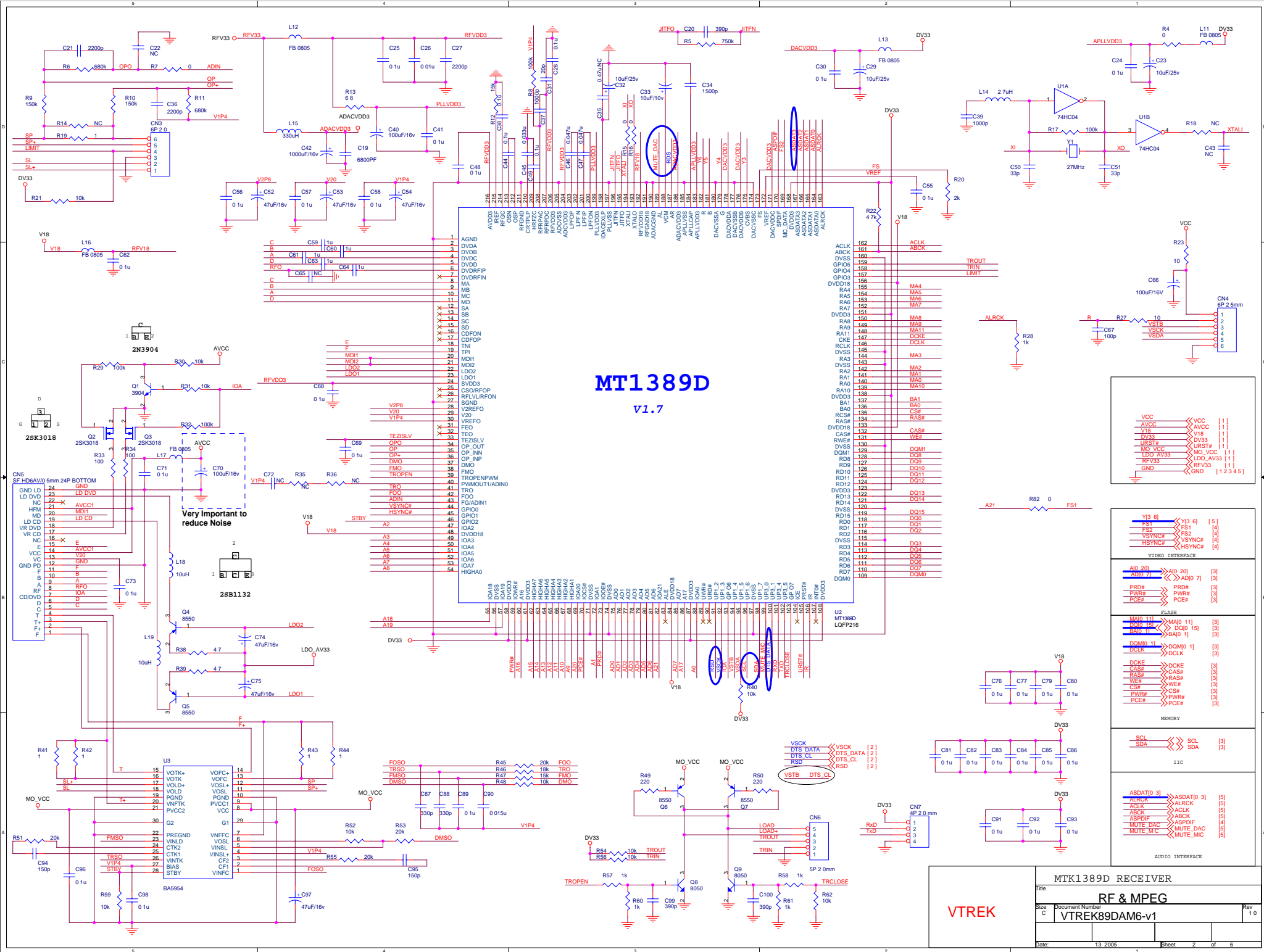
MT1389D AMP DVD Board for SONY KHM310/313 PUH

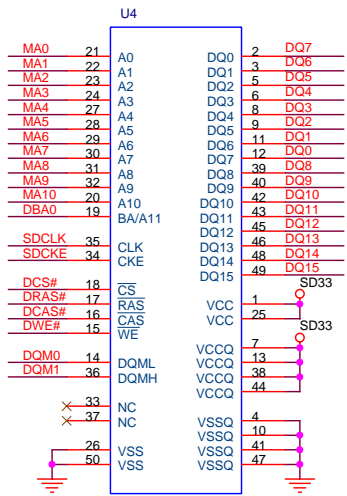
- 1 INDEX & POWER, RESET
- 2 RF, SERVO & MPEG - MT1389D
- 3 MEMORY , SDRAM
- 4 VIDEO FILTER
- 5 AUDIO DAC & FILTER & OUTPUT
- 6 TUNEER

NAME	TYPE	DEVICE
VCC	Digital 5V	SUPPLY
DV33	Digital 3.3V	MT1389E
RFV33	Servo 3.3V	MT1389E
LDO_AV33	Laser Diode 3.3V	
AVCC	RF 5V	PICKUP HEADER
V18	Digital 1.8V	MT1389E
SD33	Digital 3.3V	SDRAM
+12V	Audio +12V	OP AMP.
12V	Audio 12V	OP AMP.
AVDD	Audio 5V	Audio DAC
DVDD	Audio 5V	Audio DAC

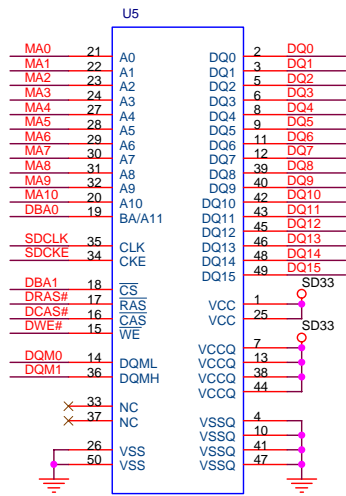


VTREK		MTK1389D RECEIVER	
		INDEX	
Size	Document Number	VTREK89DAM6-V1	
C		Rev 1.0	
Date		13 2005	Sheet 1 of 6

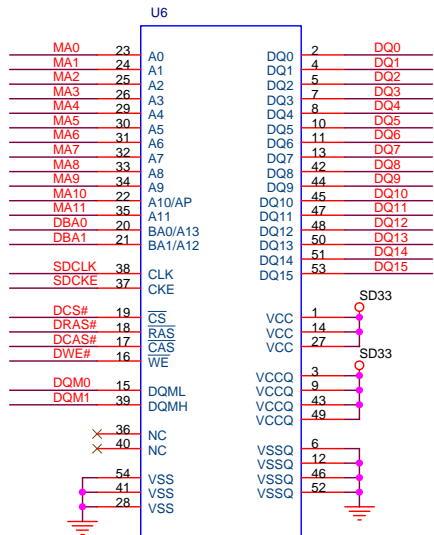




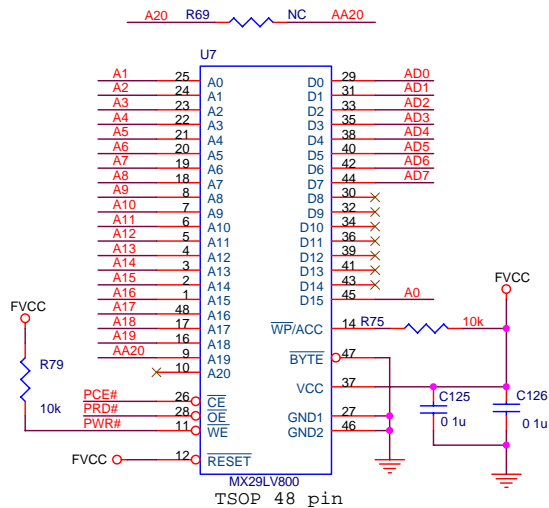
ESMT M12L16161A ?



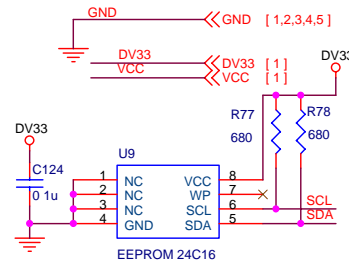
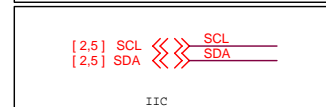
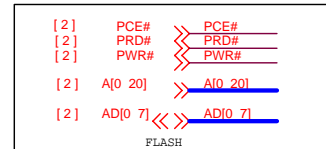
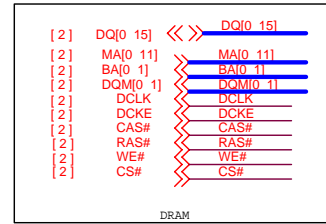
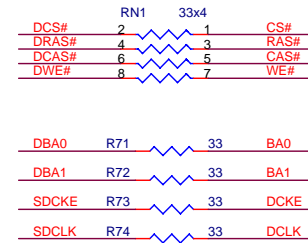
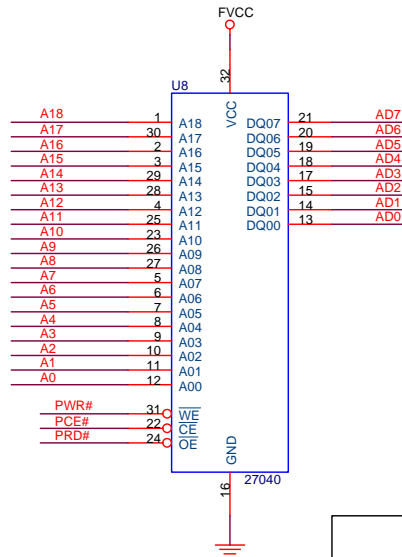
ESMT M12L16161A ?



ESMT M12L64164A ?
TSOP54

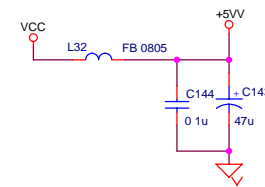
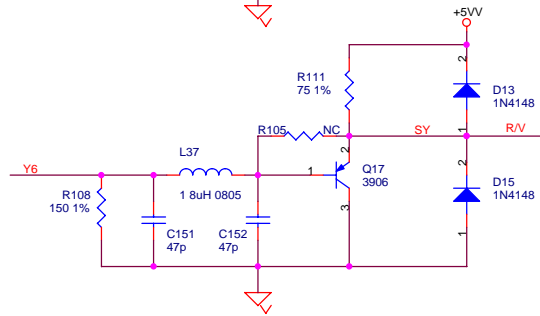
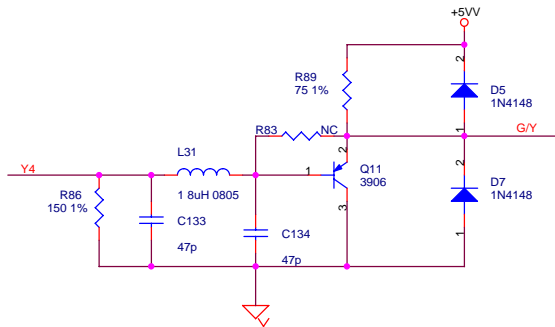
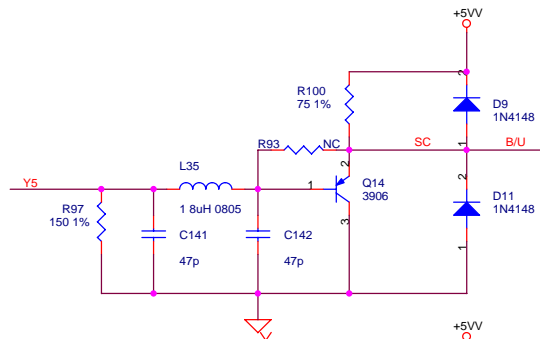
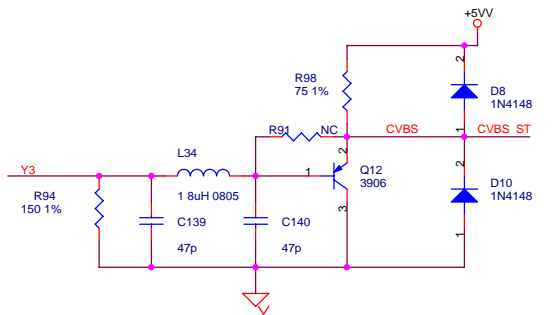


MX29LV800
TSOP 48 pin

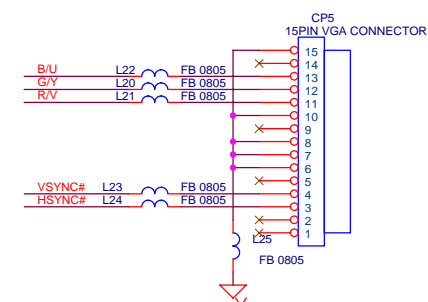
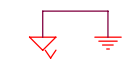
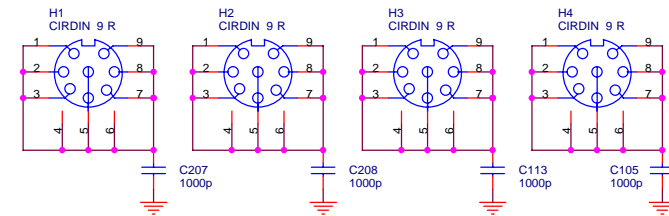
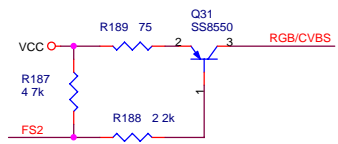
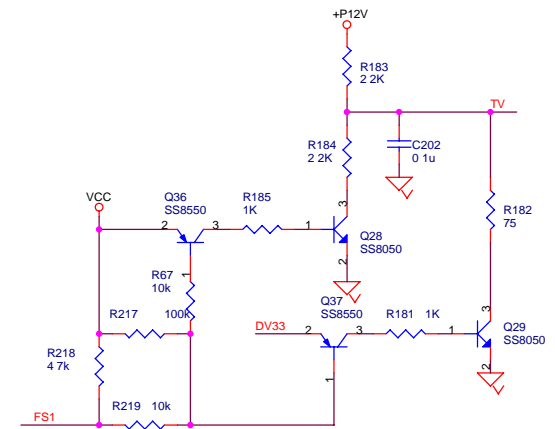
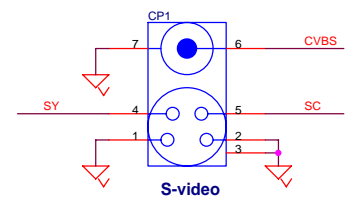
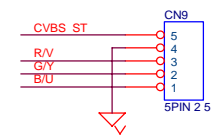


VTREK

MTK1389D RECEICVER			
Title			
SDRAM & FLASH			
Size B	Document Number VTREK89DAM6-v1		Rev 10
x}		x}	
Date: 13 2005		Sheet 3 of 6	



- DV33 << DV33 [1]
- VCC << VCC [1]
- Y[3 6] << Y[3 6] [2]
- FS1 << FS1 [2]
- FS2 << FS2 [2]
- GND << GND [1]
- G/Y >> G/Y [5]
- B/U >> B/U [5]
- R/V >> R/V [5]
- TV >> TV [5]
- RGB/CVBS >> RGB/CVBS [5]
- VSYNCS << VSYNCS [2]
- HSYNCS << HSYNCS [2]



VTREK	MTK1389D RECEICVER		
	VIDEO OUT		
	Size	Document Number	Rev
	Custom	VTREK89DAM6-v1	1 0
Date	13, 2005	Sheet	4 of 6

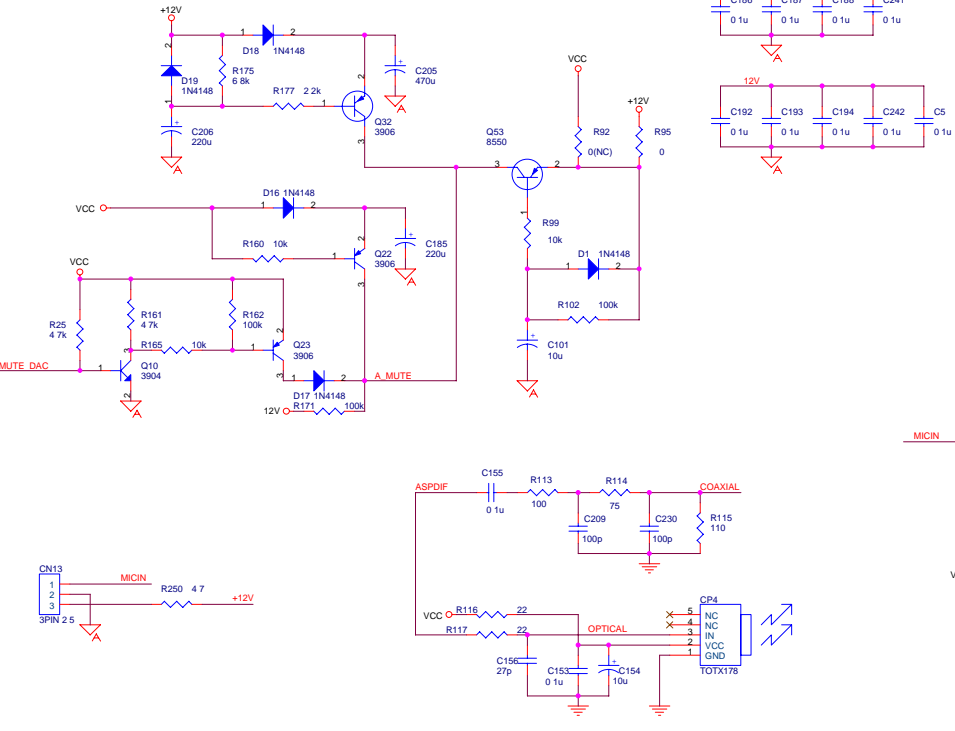
- [1] DV33 >> DV33
- [1] 12V >> 12V
- [1] +12V >> +12V
- [1] VCC >> VCC
- [1] VCC_AUDIO >> VCC_AUDIO
- [1 2 3 4] GND >> GND

- [2] ASDAT[0 3] >> ASDAT[0 3]
- [2] ACLK >> ACLK
- [2] ABCK >> ABCK
- [2] ALRCK >> ALRCK
- [2] MUTE_MIC >> MUTE_MIC
- [2] MUTE_DAC >> MUTE_DAC
- [2 5] SCL >> SCL
- [2 5] SDA >> SDA
- [2] ASPDIF >> ASPDIF
- [4] R/V >> R/V
- [4] G/Y >> G/Y
- [4] B/U >> B/U
- [4] TV >> TV
- [4] RGB/ CVBS >> RGB/ CVBS

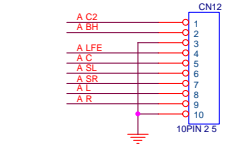
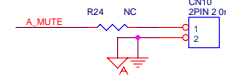
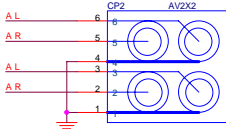
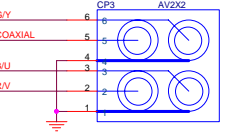
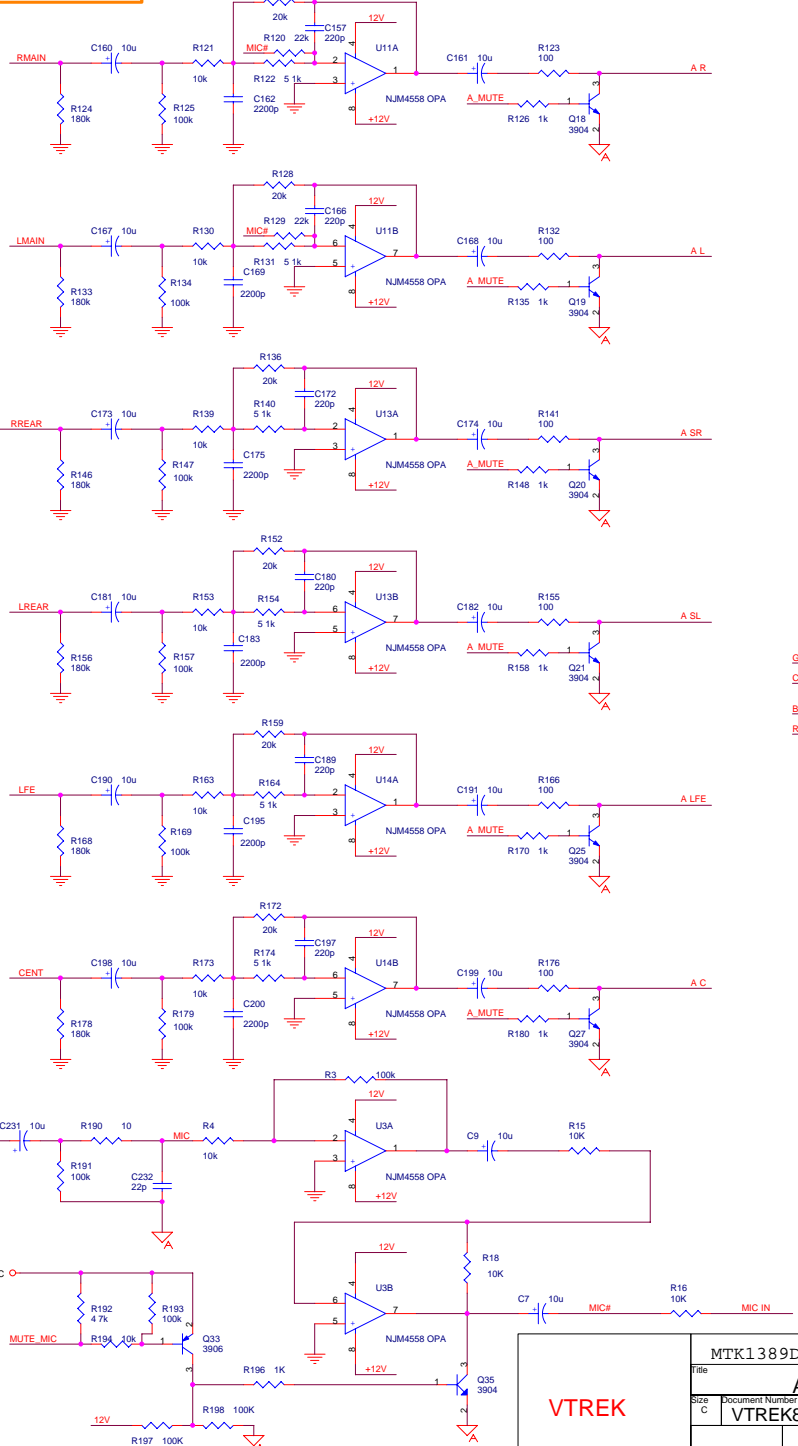
- ACLK R142 33 SACLK
- ALRCK R143 33 SLRCK
- ABCK R144 33 SBCLK
- ASDAT0 R149 33 SDAT0
- ASDAT1 R150 33 SDAT1
- ASDAT2 R151 33 SDAT2
- ASDAT3 R152 33 SDAT3
- R26 NC

HARDWARE: IIS 24BIT

#36 2ch out install, 5 1 and 7 1 n



2ch out install R37,R63 install



VTREK			
MTK1389D RECEIVER			
AUDIO OUTPUT			
Size C	Document Number	VTREK89DAM6-V1	Rev 1.0
Date: 13 2005 Sheet 5 of 6			

